



## FlowDrive Actuator



## DC Flap Motor for HVAC Applications | FlowDrive Actuator

1 | 3



The **FlowDrive Actuator** is a next-generation compact DC motor engineered for **precise movement and reliable control** across a wide spectrum of applications.

Unlike conventional actuators limited to HVAC systems, FlowDrive extends its functionality to **motorized valve operations, flap control, airflow direction management, and even door locking mechanisms**. This versatility makes it a **multi-purpose solution** for both automotive and industrial environments.

Its **robust housing, universal connection interface, and precise adjustment capability** ensure seamless integration into complex systems. Designed to operate in demanding conditions, the FlowDrive Actuator delivers **long-term durability, accurate positioning, and smooth operation**, even under continuous load.

### Application Areas

#### Automotive

- **Frontbox systems** – Flap positioning for airflow control
- **Frontbox systems** – Valve control
- **Side-wall and rear heaters** – Water flow regulation with valve integration
- **HVAC units** – Flap positioning and airflow management
- **Water-based heat pump systems** – Air and water flow control
- **Door lock mechanisms** – Reliable actuation for locking systems
- **Engine exhaust valve control** – Accurate adjustment of exhaust flow
- **Micro-motion requirements** – Small-scale movement solutions in vehicles

#### Industrial

- **Industrial automation** – Wide range of micro-movement applications
- **Furniture systems** – Compact actuation solutions
- **Ventilation systems** – Flap positioning and airflow control in industrial and building environments
- Dosing systems and other industrial processes
- Packaging machines
- Building automation

### Technical Specifications

#### Technical Features

- **Gearing:** Irreversible
- **Mounting position:** Actuator vertical on top  $\pm 90^\circ$  (other positions on request)
- **Direction of rotation:** Right / Left
- **Rotation angle drive shaft:**  $182^\circ -2/+5$
- **Rated speed:**  $6 \pm 2$  rpm
- **Rated torque:** 0.4 Nm
- **Temperature range:**  $-40^\circ\text{C} \dots +85^\circ\text{C}$

#### Electrical Features

##### 12 V Version

- **Rated voltage:** 12V DC
- **Operating voltage:** 8–16V DC
- **Rated current:**  $<0.12\text{A}$
- **No load current:**  $<0.1\text{A}$
- **Blockage current:**  $<0.35\text{A}$
- **Potentiometer:** 5 kOhm (operating range 1–4 kOhm)
- **IP class:** IP65 (with corresponding socket)

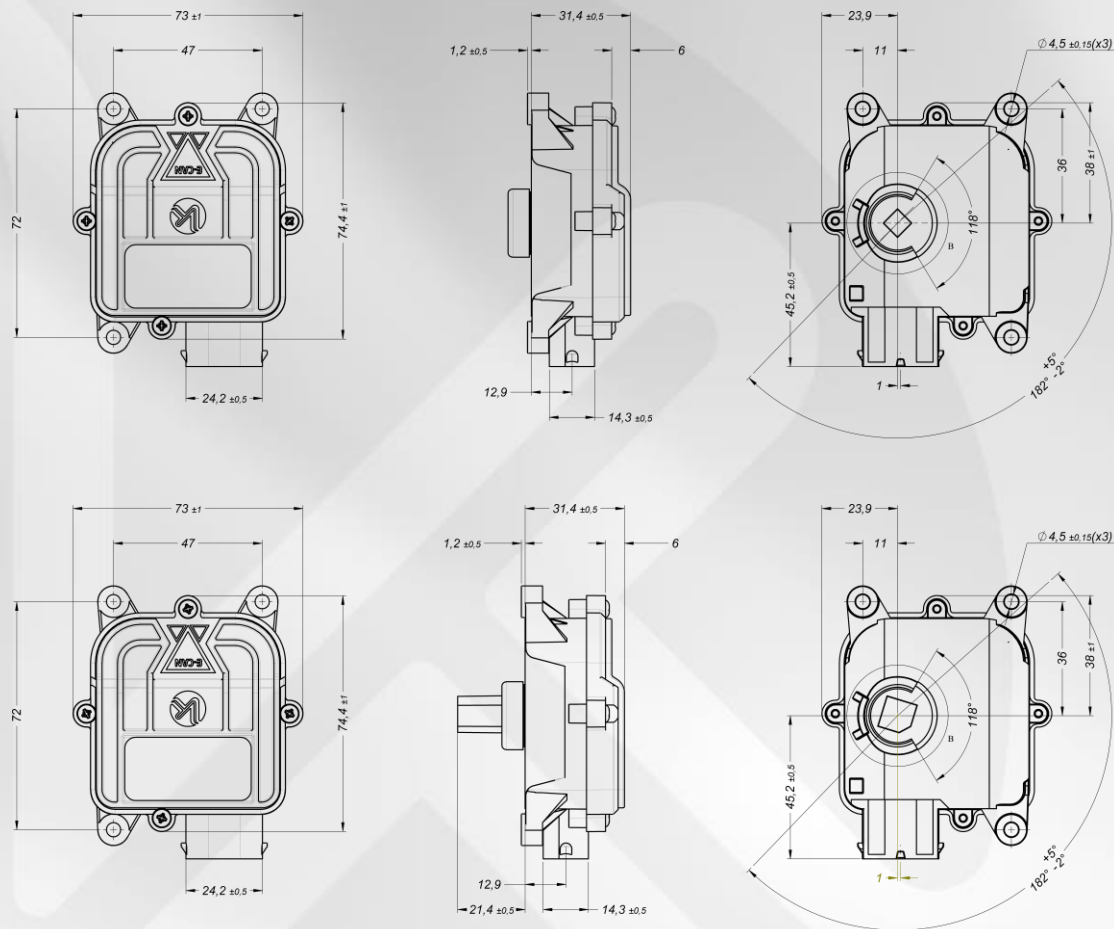
##### 24 V Version

- **Rated voltage:** 24V DC
- **Operating voltage:** 16–32V DC
- **Rated current:**  $<0.10\text{A}$
- **No load current:**  $<0.08\text{A}$
- **Blockage current:**  $<0.25\text{A}$
- **Potentiometer:** 5 kOhm (operating range 1–4 kOhm)
- **IP class:** IP65 (with corresponding socket)

DC Flap Motor for HVAC Applications | FlowDrive Actuator

Product Code	Nominal Voltage	Nominal Voltage Range	Nominal Current (In)	Nominal Speed	Nominal Torque	Stall Torque	Direction of Rotation	Degree of protection	Signal Pot	Wiring Diagram	Drive End	Connector	Performance Curve
	VDC	VDC	A	rpm	Nm	N		IP		W	S	C	P
36050105	12	8-16	0,12	6	0,4	0,9	CW/CCW	65	Yes	W1	S1	C1	P1
36050105AA	12	8-16	0,12	6	0,4	0,9	CW/CCW	65	Yes	W1	S2	C1	P1
36050106	24	16-32	0,10	6	0,4	0,9	CW/CCW	65	Yes	W1	S1	C1	P2
36050106AA	24	16-32	0,10	6	0,4	0,9	CW/CCW	65	Yes	W1	S2	C1	P2
IP Class : IP65 (with corresponding socket)													

Dimensions



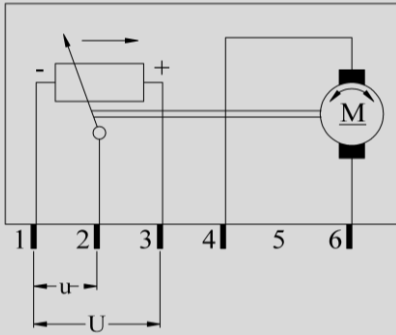
S1

S2

## DC Flap Motor for HVAC Applications | FlowDrive Actuator

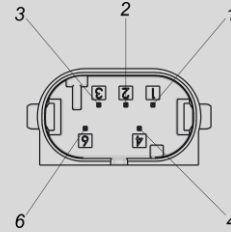
3 | 3

### Wiring Diagram (W)



W1

### Mating Connector (C)

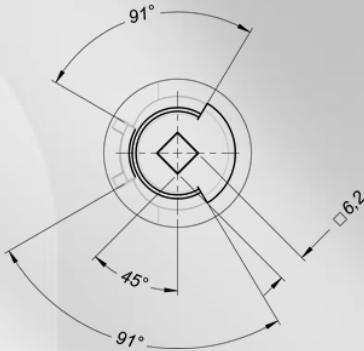


Tyco 1-967616-1

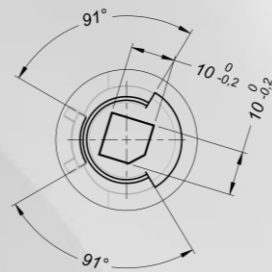
C1

### Drive end (S)

S1

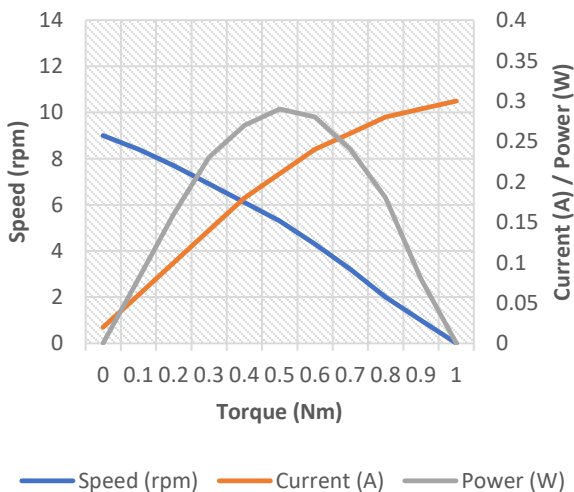


S2

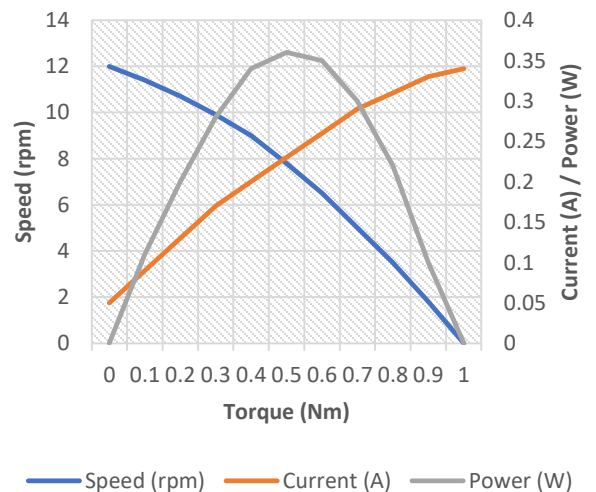


### Performance Curve (P)

P1



P2





## İSTANBUL



Tekstilkent Ticaret Merkezi Oruçreis Mah.  
Tekstilkent Cad. No:10-AN Blok No:Z02  
(A7 Blok No:12) ESENLER/İSTANBUL/TURKEY



+90 212 - 659 06 32 (PBX)  
+90 212 - 659 16 42

## SAKARYA



1.Organize Sanayi Bölgesi 1. Yol No:35, 54582,  
ARİFİYE/SAKARYA/TURKEY



+90 264 - 291 01 44 (PBX)  
+90 264 - 291 06 92

Follow us on social media;



[www.baskurt.com](http://www.baskurt.com)



[info@baskurt.com](mailto:info@baskurt.com)

Türkey

Discover  
the potential



# BASKURT

Thank you...