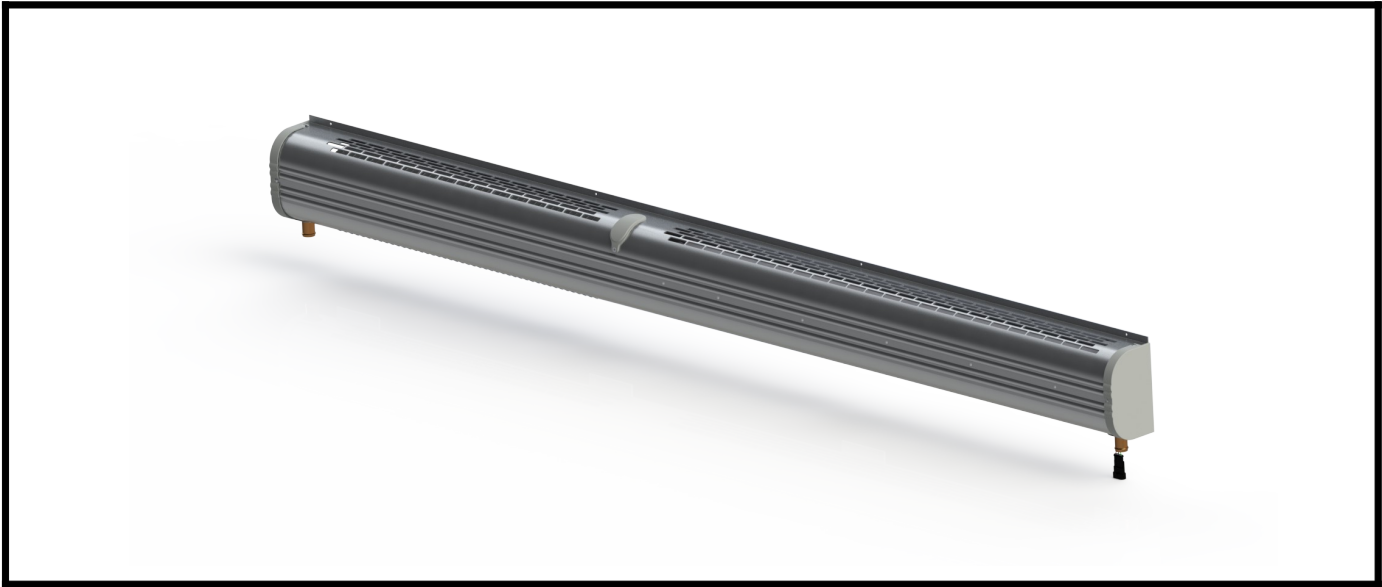


**PART NUMBER : 55085902**

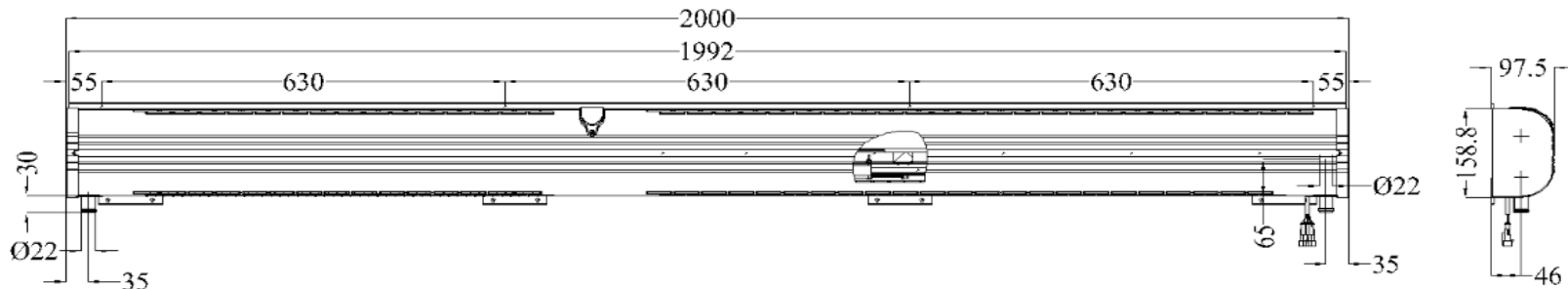
**NATURAL AND FORCED AIR CONVECTORS**

**TECHNICAL SPECIFICATIONS**

Test Voltage	V	12
Current	A	1,3
Test Reference		Q80
Water Flow Rate	lt/h	1000
Water Inlet Temperature	°C	80
Ambient Temperature	°C	0
Heat Capacity	kW/h	5



**DIMENSIONS**



**MATING CONNECTOR  
TYCO 282087-1**

